

PRELIMINARY

Splice Assemblies

Designed to hold two lengths of *Louden* track in alignment by clamping to the track web, all *Louden* track splice assemblies are furnished complete with two splice plates, eight 3/4" dia. shoulder machine screws and shoulder nuts, and the required number of shims, as needed. Although the track splice assemblies are not load bearing members, they help assure proper alignment of the operating tread of two adjoining lengths of *Louden* track.

607.5011 (40-1051)

Wt. 5 lbs.

Used to connect tracks with like web thickness up to 5/16".

607.5012 (40-1052)

Wt. 5 lbs.

Used to connect 7/16" web track to 7/16" web track.

607.5016 (40-1060)

Wt. 5 lbs.

Used to connect 1/4" web track to 5/16" web track.

607.5013 (40-1063)

Wt. 5 lbs.

Used to connect 5/16" web track to 7/16" web track.

607.5014 (40-1061)

Wt. 5 lbs.

Used to connect 1/4" web 604 Series SuperTrack Girder to SuperTrack Girder furnished prior to March 1, 1978 and to SuperTrack.

607.5015 (40-1062)

Wt. 5 lbs.

Used to connect 5/16" web 604 Series SuperTrack Girder to SuperTrack Girder furnished prior to March 1, 1978 and to SuperTrack.

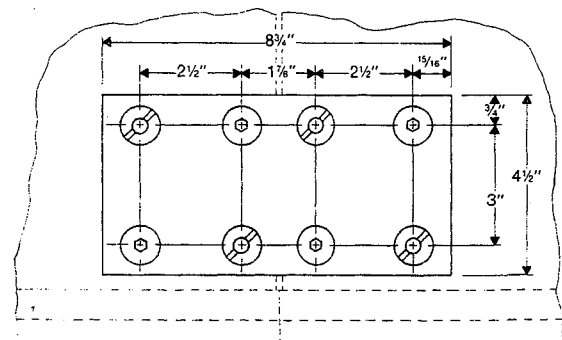
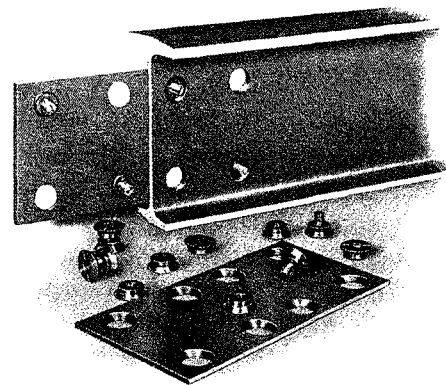
Issued 9-07-01

607-1

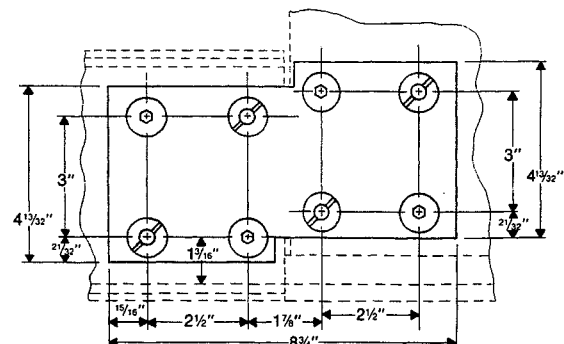
LOUDEN®

**MONORAIL AND CRANE
SYSTEM TRACK**

**TRACK
SUSPENSION ASSEMBLIES**



607.5011, 607.5012, 607.5013, 607.5016



607.5014, 607.5015

PRELIMINARY

The following splice assemblies are used when connecting track with new style 604 and 605 tee to track with old style 604 and 605 tee and to 603.6 SuperTrack. The new style 604 and 605 tee was introduced in 2014.

607.5021

Offset splice used to connect 604 & 605 track with like web thicknesses up to 5/16" thick.

607.5022

Offset splice used to connect 605 track with like web thicknesses of 7/16" thick.

607.5023

Offset splice used to connect 605 track with 5/16" web track to 7/16" web track.

607.5024

Offset splice used to connect 1/4" web 604 series track to 603.6 SuperTrack and SuperTrack Girder furnished prior to March 1, 1978.

607.5025

Offset splice used to connect 1/4" web 604 series track to 603.6 SuperTrack and SuperTrack Girder furnished prior to March 1, 1978.

607.5026

Offset splice used to connect 604 track with 1/4" web track to 604 track with 5/16" web.

607.5027

Offset splice used to connect 604 track with 1/4" web to 604 track with 3/8" web.

607.5028

Offset splice used to connect 605 track with 3/8" web to 605 track with 7/16" web.

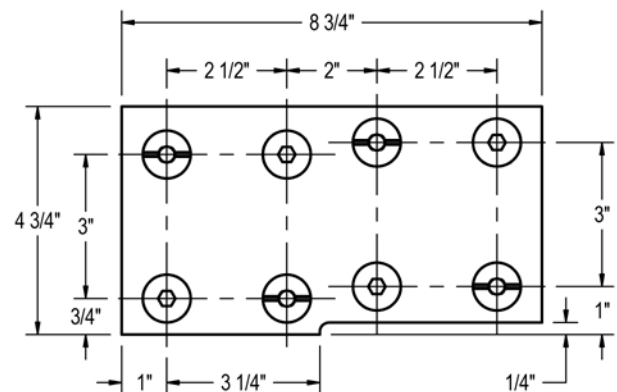
Issued 8-15-14

607-1.1

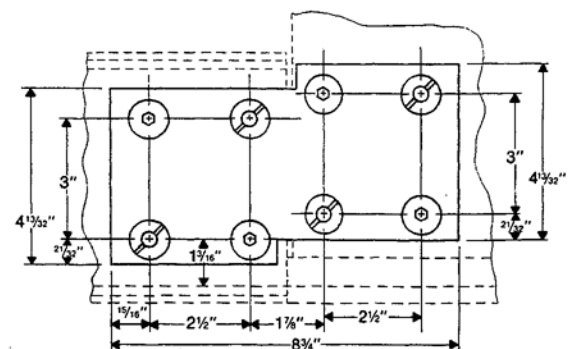
LOUDEN®

**MONORAIL AND CRANE
SYSTEM TRACK**

**TRACK
SUSPENSION ASSEMBLIES**



**607.5021, 607.5022, 607.5023,
607.5026, 607.5027, 607.5028**



607.5024, 607.5025.



LOUDEN® MONORAIL AND CRANE SYSTEM TRACK TRACK SUSPENSION ASSEMBLIES

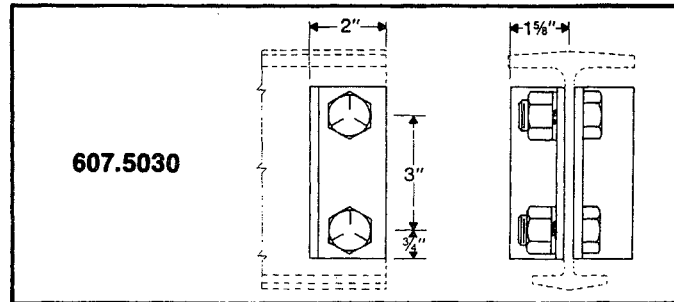
Issued 9-07-01

607-2

End Stops

607.5030 (28-0236)
Wt. 3-1/2 lbs.

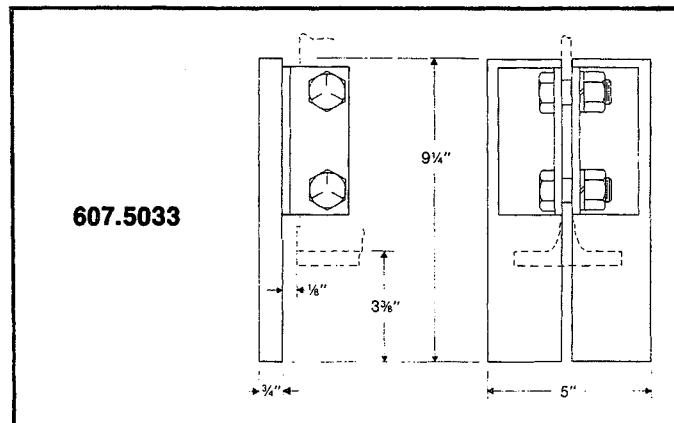
This wheel stop, made of two heavy steel angles, is clamped through standard splice holes in the track web by two 3/4" x 2" Grade 5 hex head cap screws, nuts, and lock washers. It may be located either mid-span or at the rail end. Wheel stops are not recommended where loadbar stops can be used.



Close Approach End Stop

607.5033 (28-0689)
Wt. 8-5/8 lbs.

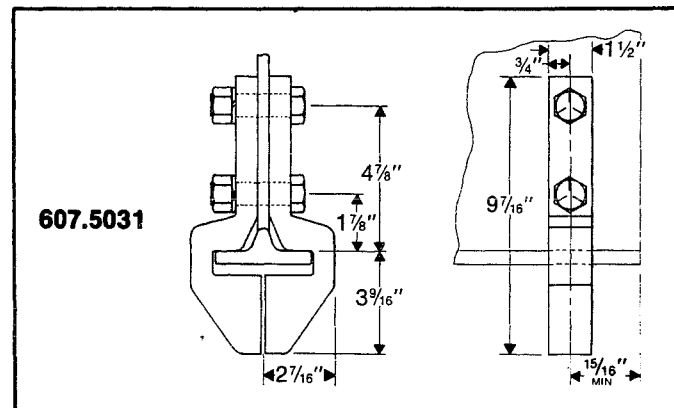
This loadbar stop is designed to help provide stop protection at the track ends of all Louden systems by clamping to the web of the track through standard splice holes. It is not to be used as a wheel stop. Fabricated from heavy steel angles and 3/4" steel bar stock, the two halves of the stop are furnished with two 3/4" x 2" Grade 5 hex head cap screws, nuts, and lock washers. Use only when bumper protrudes past wheel tread by at least 1-3/4".



Universal Stop

607.5031 (28-0691)
Wt. 12-1/2 lbs.

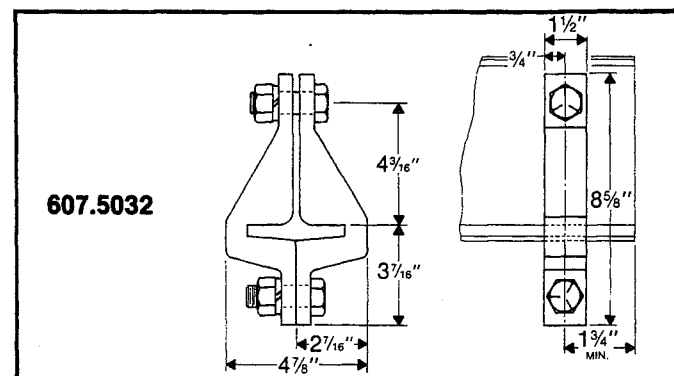
The heavy-duty universal loadbar stop clamps to 604 and 605 Girder track with two 3/4" x 2-3/4" Grade 5 hex head cap screws, nuts, and lock washers. It may be located in standard splice holes or can be located in mid-span during system erection.



Intermediate Stop

607.5032 (28-0659)
Wt. 8-1/2 lbs.

This loadbar/wheel stop clamps to 603.6 SuperTrack with 7/8" x 2-1/2" and 3/4" x 2-1/4" Grade 5 hex head cap screws, nuts, and lock washers. It is normally used in mid-span but may be used as an end stop if the stop centerline is a minimum 1-3/4" from the end of the rail. Located during system erection, this stop requires one 15/16" diameter hole in the web of the track. Layouts must show exact location.



ACCO Material Handling Solutions
76 Acco Drive, Box 792, York, PA 17405-0792
717-741-4863, 800-967-7333, FAX 800-715-8897
E-mail: info@accomhs.com www.accomhs.com

PRELIMINARY
© 2007 FKI Industries Inc.
Printed in USA



**LOUDEP® MONORAIL AND CRANE SYSTEM TRACK
TRACK SUSPENSION ASSEMBLIES**

ISSUED 8-15-14

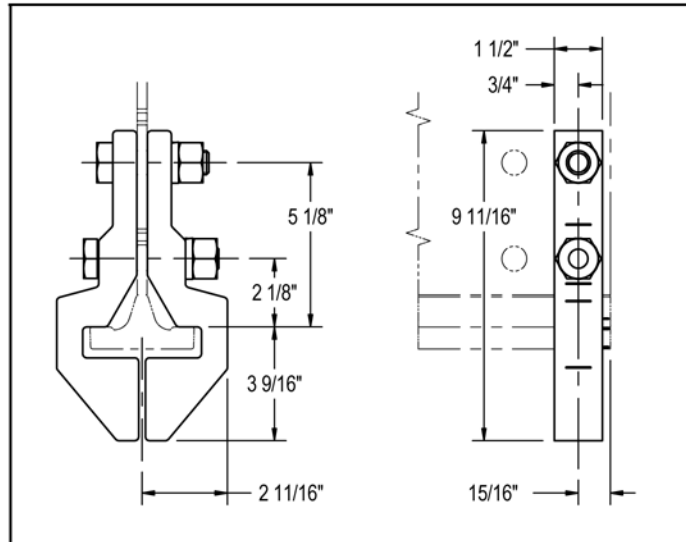
607-2.1

Universal Stop

607.5034 (280193)

Wt. 12-1/2 lbs.

The heavy-duty universal loadbar stop clamps to 604 and 605 Girder track with two 3/4" Grade 5 hex head cap screws, nuts, and lock washers. It may be located in standard splice holes or can be located mid-span during system erection. This is for use on track with new style 604 and 605 tee introduced in 2014.

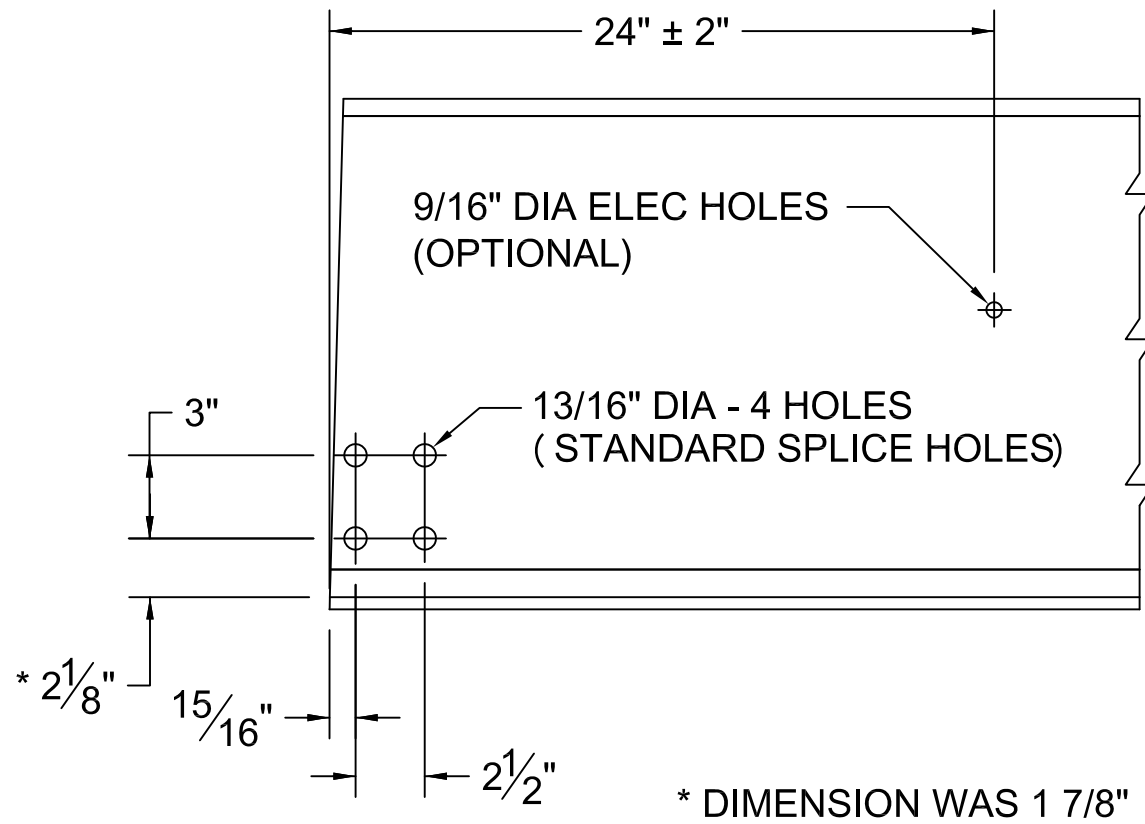


PRELIMINARY

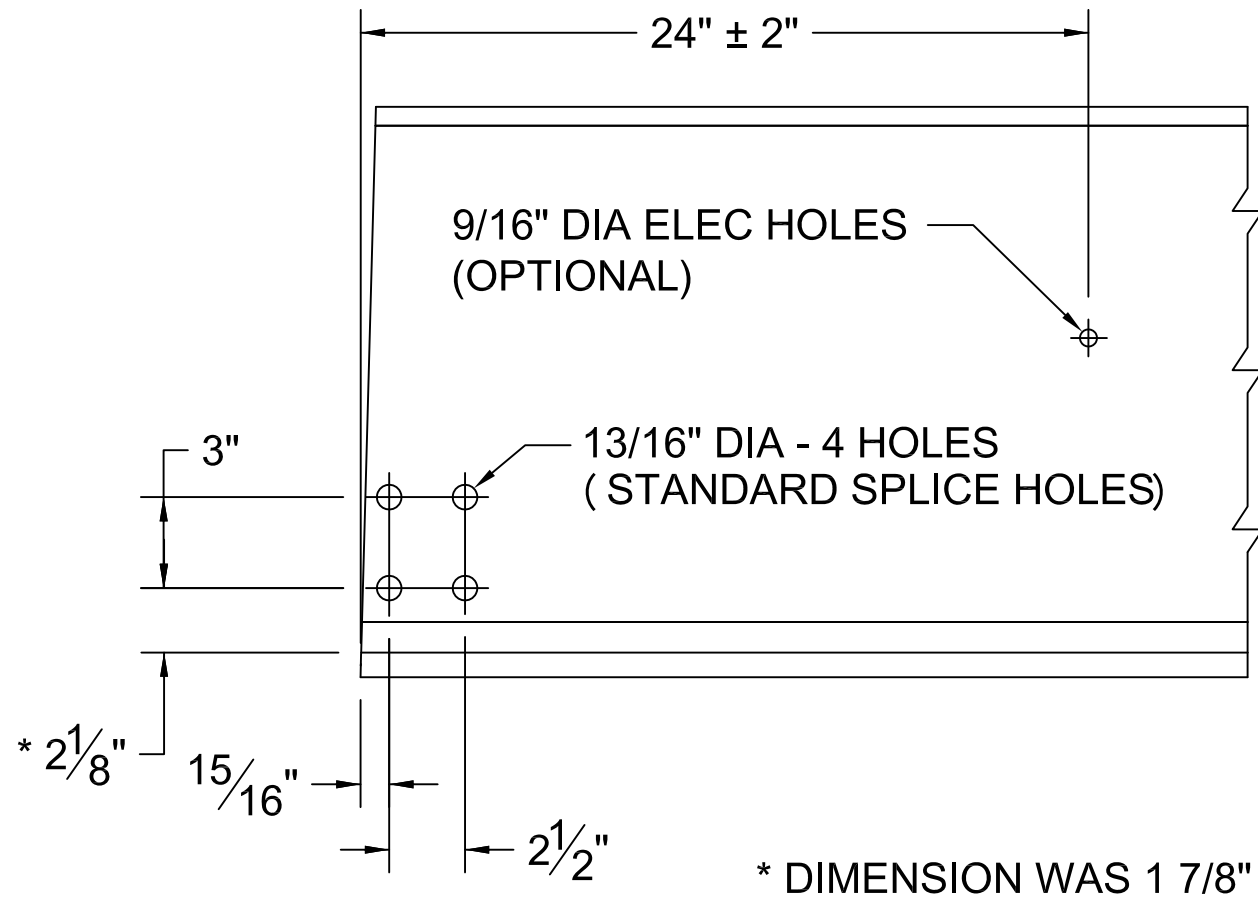


Acco Material Handling Solutions
76 Acco Drive, Box 792, York, PA 17405-0792
717-741-4863, 800-967-7333, FAX 800-715-8897
E-mail: info@accomhs.com www.accomhs.com

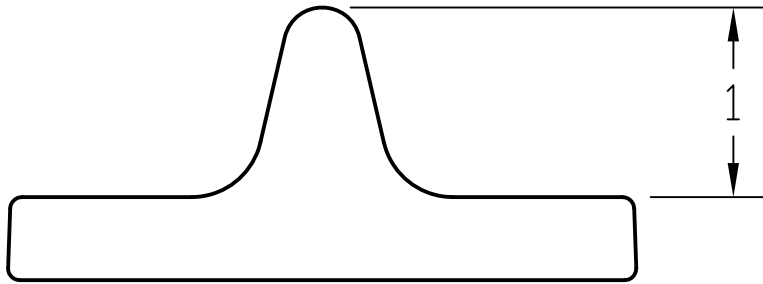
© 2007 FKI Industries Inc.
Printed In USA



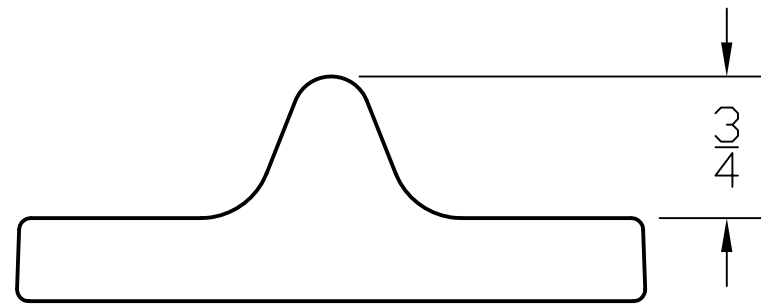
SUPERTRACK GIRDER INTRODUCED IN 2014



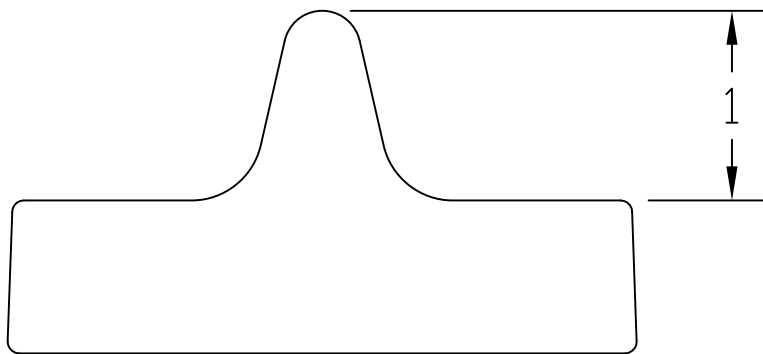
TROJANTRACK GIRDER INTRODUCED IN 2014



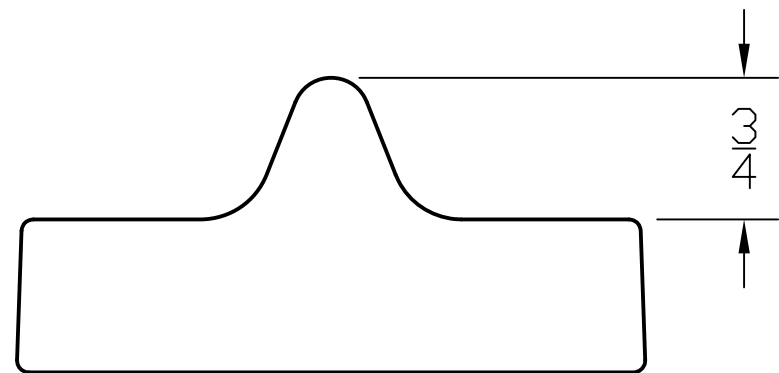
NEW STYLE 604 TEE INTRODUCED IN 2014



OLD STYLE 604 TEE REPLACED IN 2014



NEW STYLE 605 TEE INTRODUCED IN 2014



OLD STYLE 605 TEE REPLACED IN 2014